



Care at home

RÜSCH® FLOCATH QUICK™ USER GUIDE

Hydrophilic Intermittent Catheter

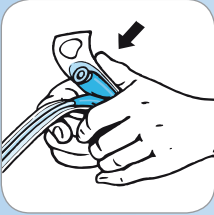


Teleflex®

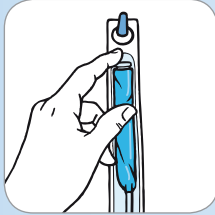
FLOCATH QUICK™

HYDROPHILIC INTERMITTENT CATHETER

APPLICATION INFORMATION



1 Fold and squeeze the pouch containing the sterile saline solution without opening the peel-back pouch. The liquid is released into the packaging.



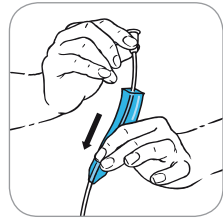
2 Hang the package by its thumb grip or fix it to a suitable surface using the self-adhesive patch.



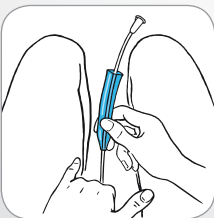
3 Allow 30 seconds for the coating to become activated.



4 Tear the packaging open by the thumb grips and remove the catheter using the protective sleeve.



5 Holding the funnel, slide the protective sleeve along the catheter towards the tip. The sleeve will glide easily over the catheter.



6 Holding the protective catheter sleeve, insert the catheter into the bladder.

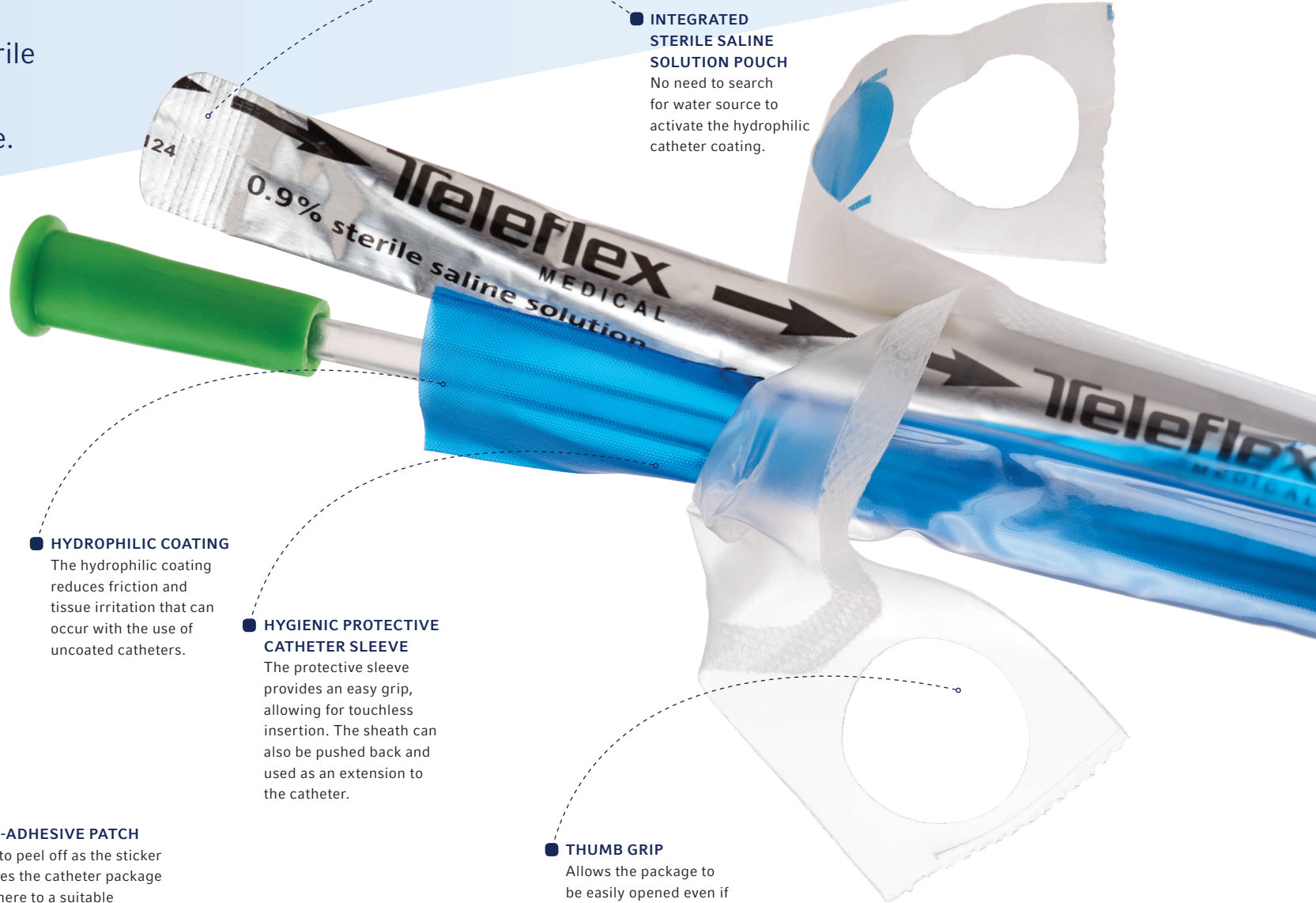


7 The protective catheter sleeve can now be slid back over the funnel and used as an extension while emptying the bladder.



8 Remember to wash or disinfect your hands before and after catheterization.

Your solution for quick, easy intermittent catheterization. With integrated sterile 0.9% saline pouch and easy grip sleeve.

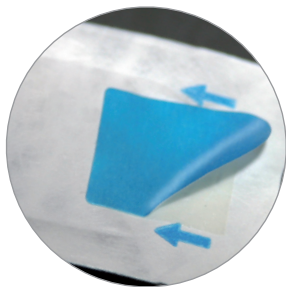


■ **INTEGRATED STERILE SALINE SOLUTION POUCH**
No need to search for water source to activate the hydrophilic catheter coating.

■ **HYDROPHILIC COATING**
The hydrophilic coating reduces friction and tissue irritation that can occur with the use of uncoated catheters.

■ **HYGIENIC PROTECTIVE CATHETER SLEEVE**
The protective sleeve provides an easy grip, allowing for touchless insertion. The sheath can also be pushed back and used as an extension to the catheter.

■ **THUMB GRIP**
Allows the package to be easily opened even if manual dexterity is limited. It can also be used to hang the catheter package.



■ **SELF-ADHESIVE PATCH**
Easy to peel off as the sticker enables the catheter package to adhere to a suitable surface, allowing both hands to remain free.



CAUTION
Prior to use, read all instructions that accompany your product for the current warnings, precautions, contraindications, and instructional information applicable to the device.

YOUR SOLUTION FOR QUICK, EASY INTERMITTENT CATHETERIZATION

Teleflex, through its Rusch® Products, is a proud pioneer in urology. Through our global operations, we are one of the world's largest producers of catheters. Our comprehensive line of urological innovations provides a variety of solutions for bladder management.

FLOCATH QUICK™ HYDROPHILIC INTERMITTENT CATHETER

FLOCATH QUICK STANDARD 16" 30/BOX

PRODUCT #	SIZE
220400060	6 Fr
220400080	8 Fr
220400100	10 Fr
220400120	12 Fr
220400140	14 Fr
220400160	16 Fr

FLOCATH QUICK FEMALE 7" 30/BOX

PRODUCT #	SIZE
220500060	6 Fr
220500080	8 Fr
220500100	10 Fr
220500120	12 Fr
220500140	14 Fr
220500160	16 Fr

FLOCATH QUICK KIT

FLOCATH QUICK STANDARD 16" 50/BOX

PRODUCT #	SIZE
221400060	6 Fr
221400080	8 Fr
221400100	10 Fr
221400120	12 Fr
221400140	14 Fr
221400160	16 Fr

FLOCATH QUICK FEMALE 7" 50/BOX

PRODUCT #	SIZE
221500060	6 Fr
221500080	8 Fr
221500100	10 Fr
221500120	12 Fr
221500140	14 Fr
221500160	16 Fr

FOR MORE INFORMATION, CONTACT CUSTOMER SERVICE AT 1.800.334.4475 OR 1.866.246.6990 OR VISIT OUR WEBSITE AT TELEFLEX.COM.

Teleflex, FloCath, Quick and Rusch are trademarks or registered trademarks of Teleflex Incorporated or its affiliates.

Teleflex is a global provider of medical products designed to enable healthcare providers to protect against infections and improve patient and provider safety. The company specializes in products and services for vascular access, respiratory, general and regional anesthesia, cardiac care, urology and surgery. Teleflex also provides specialty products for device manufacturers.

© 2013 Teleflex Incorporated. All rights reserved. 2013-2113

TELEFLEX PO Box 12600 Research Triangle Park, NC 27709

Toll Free: 866.246.6990 Phone: +1.919.544.8000

TELEFLEX.COM

Teleflex®